

FILA

Designer

D. Debiasi & F. Sandri

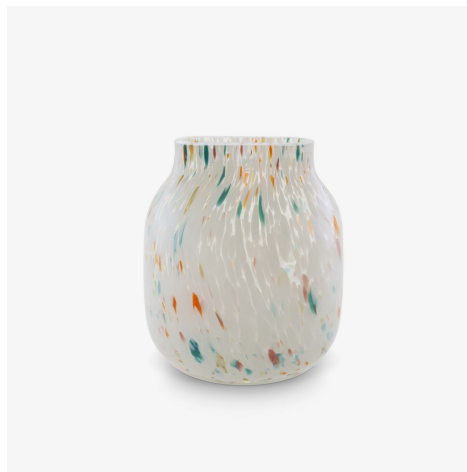
Technical characteristics

The principal originality of these vases resides in the long, narrow opening which skilfully counters the imposing base. Flowers can thus be arranged in a single-file line of vegetation. In the low version in matt white porcelain, it could be seen as a stylised iron, whilst the large version in amber-tinted glass with mercury glass interior is like an ancient jar.

More information on

www.ligne-roset.com

© Ligne Roset 2023



PRODUCTS

VASE SMALL MULTICOLOUR



DIMENSIONS

Height 227 mm

Diameter 200 mm

Weight 2.5 kg

VASE LARGE MULTICOLOUR



DIMENSIONS

Height 320 mm

Diameter 200 mm

Weight 4 kg