

# FILA

## Designer

D. Debiasi & F. Sandri

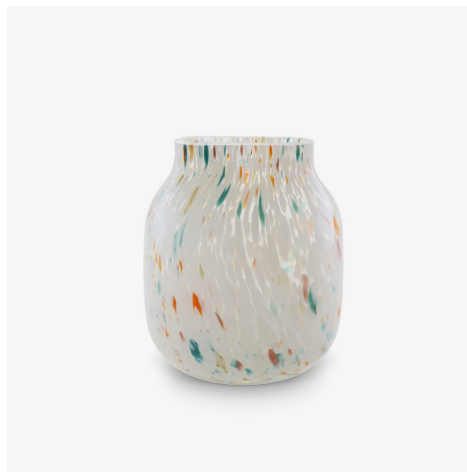
## Technical characteristics

The principal originality of these vases resides in the long, narrow opening which skilfully counters the imposing base. Flowers can thus be arranged in a single-file line of vegetation. In the low version in matt white porcelain, it could be seen as a stylised iron, whilst the large version in amber-tinted glass with mercury glass interior is like an ancient jar.

## More information on

[www.ligne-roset.com](http://www.ligne-roset.com)

© Ligne Roset 2023



## PRODUCTS

### VASE SMALL MULTICOLOUR



### DIMENSIONS

Height 227 mm

Diameter 200 mm

Weight 2.5 kg

### VASE LARGE MULTICOLOUR



### DIMENSIONS

Height 320 mm

Diameter 200 mm

Weight 4 kg