

ASYMMETRIC

Designer

Piyush & Gaurav

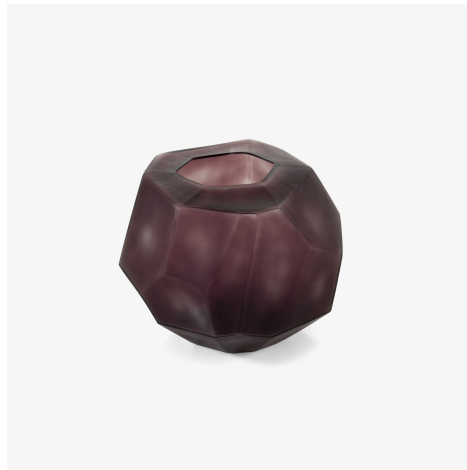
Technical characteristics

The Asymmetric vase is made of moulded tinted glass, with a double layer, mouth-blown, moulded, sculptural shape, faceted like a diamond, semi-opaque finish.

More information on

www.ligne-roset.com

© Ligne Roset 2023



PRODUCTS

SET OF 2 VASES AMETHYSTE



DIMENSIONS

Height 225 mm

Width 280 mm

Depth 280 mm

Weight 10.2 kg