

TERRE D'OMBRES

Designer

Minimum Design

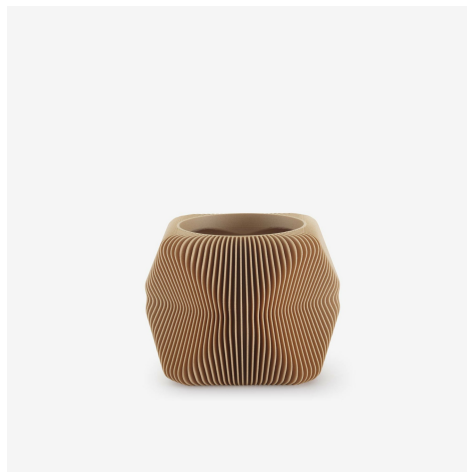
Technical characteristics

Terre d'ombres is a minimalist, Scandinavian-influenced family of indoor pot covers in either noir or naturel. Each vase has a label stating the time it took to produce. Pot cover made from 3D-printed bio-plastic (70 % maize starch / 30 % recycled wood).

More information on

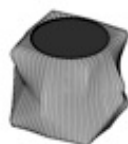
www.ligne-roset.com

© Ligne Roset 2023



PRODUCTS

POT COVER NATURAL



DIMENSIONS

Height 145 mm

Width 190 mm

Depth 190 mm

Weight 0.7 kg

POT COVER BLACK



DIMENSIONS

Height 145 mm

Width 190 mm

Depth 190 mm

Weight 0.7 kg