

# RUG ORIENTALI

## Designer

M.-A. Stiker-Metral

## Description

A very attractive graphic rug. Marie-Aurore has selected soft tones of vert d'eau (aqua), with a darker tone for emphasis. Hand tufted rug 100 % wool, 200 x 300.

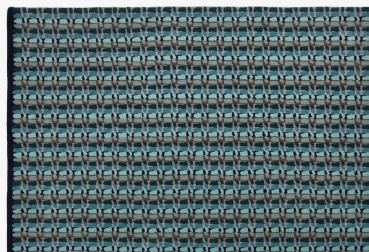
## Technical characteristics

A very attractive graphic rug. Marie-Aurore has selected soft tones of vert d'eau (aqua), with a darker tone for emphasis. Hand tufted rug 100 % wool, 200 x 300.

## More information on

[www.ligne-roset.com](http://www.ligne-roset.com)

© Ligne Roset 2024



## DIMENSIONS

Width 2,000 mm | Length 3,000 mm | Weight 30 kg