

IMPETUEUX

Designer

M.-A. Stiker-Metral

Technical characteristics

The "Impétueux" rug is inspired by observing the cloudy skies. It pays homage to George Brassens for his song "L'Orage" in which the poet describes the charm of bad weather, evoking "imbecile countries where it never rains" and the time spent "contemplating the skies, watching the rain, waiting for the stratum clouds, looking for the nimbus clouds, flirting with any cumulus clouds". This rug can be looked in 2 directions: troubled sky horizontally and vertically, it draws a glacial stalactite scenery. Rug 100 % wool, short tuft background, boucle pattern.

More information on

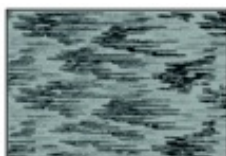
www.ligne-roset.com

© Ligne Roset 2023



PRODUCTS

RUG BACKGROUND BEIGE / SABLE



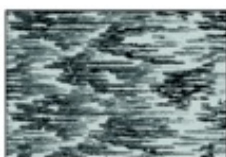
DIMENSIONS

Width 2,000 mm

Length 3,000 mm

Weight 28.5 kg

RUG BACKGROUND BLEU / VERT



DIMENSIONS

Width 2,000 mm

Length 3,000 mm

Weight 28.5 kg