

PAMUKKALE

Designer

Atelier BL 119- Blain & Dixneuf

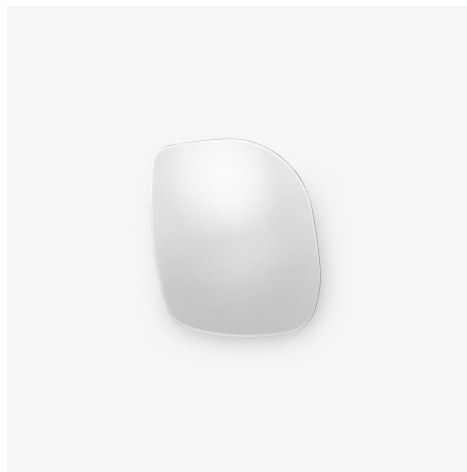
Technical characteristics

Before it became these design objects, Pamukkale was (and still is) an ancient Turkish city renowned for its thermal sources. Atelier BL 119's mirrors, with their bevelled edges, recall the successions of petrified water basins which have resulted from a thousand years of runoff from hot springs saturated with calcareous salts. - Small : mirrored glass with bevelled border, fixed to a black MDF backing which incorporates a wall bracket so it can be hung vertically. - Large : mirrored glass with bevelled border, fixed to a black MDF backing which incorporates two wall brackets so it can be hung vertically or horizontally.

More information on

www.ligne-roset.com

© Ligne Roset 2023



PRODUCTS

MIRROR SMALL



DIMENSIONS

Height 594 mm
Width 500 mm
Thickness 0 mm
Weight 8.46 kg

MIRROR LARGE



DIMENSIONS

Height 1,200 mm
Width 700 mm
Thickness 0 mm
Weight 20.54 kg